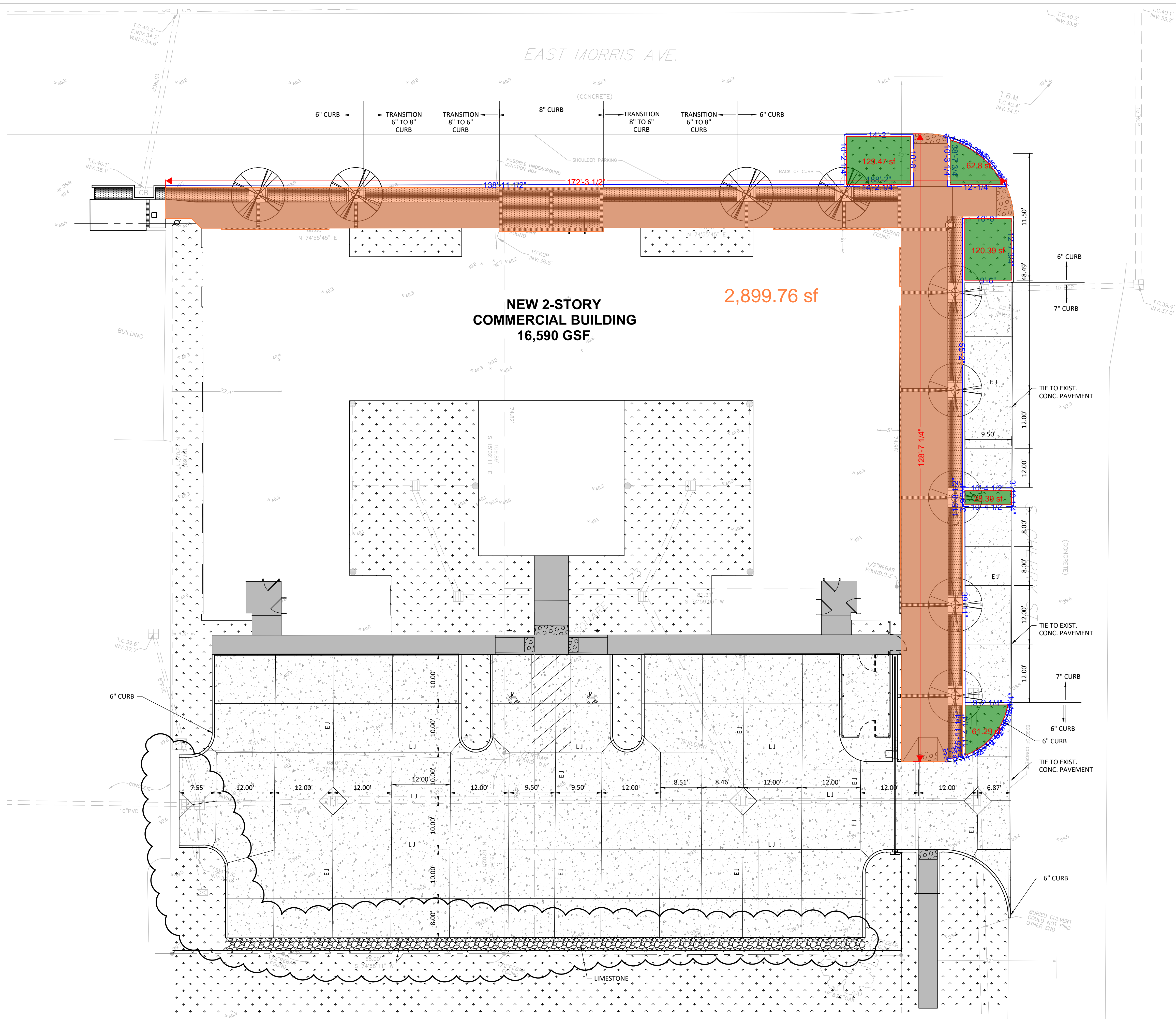


3/9/2020 8:39:25 AM

N:\2019\19069 - STOA New Office Building\Correspondence\H+S\03.03.20 (updated Revit Model)\19082_STOA_1_2020_0303.rvt



1 Paving Plan
 1" = 10'-0"
 0 10' 20'

- 1.) Sidewalks - 2,900 SF @ \$5.75/SF = \$16,675.00
 - 2.) Curbs - 422 LF @ \$8.00/LF = \$3,376.00
 - 3.) Pavers (M & L) = \$19,203.35
 - 4.) Savannah Holly Trees (9ea) = \$4,500.00
 - 5.) Bermuda Sod - 402 SF @ \$0.60/SF = \$241.20
- Total Cost = \$43,995.55**

NOTES:

1. DISTANCES SHOWN HEREON ARE MEASURED FROM THE BACK EDGE OF PAVEMENT.
2. PAVEMENT JOINT LAYOUT SHOWN IS SUGGESTED. ALL JOINTS ARE TO BE USED WHERE SHOWN OR AS DIRECTED BY ENGINEER. PANELS SHALL NOT EXCEED TWELVE (12) FEET IN ANY DIRECTION EXCEPT WHERE UNAVOIDABLE AS SHOWN.
3. REFER TO SHT. C501 FOR PAVING DETAILS.

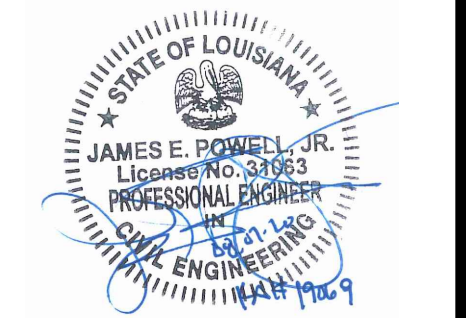
LEGEND:

- PROPERTY LINE
- ===== VERTICAL CURB (HEIGHT VARIES)
- ===== TURN-DOWN FOOTING (SIDEWALK)
- CONSTRUCTION JOINT
- EJ EXPANSION JOINT
- LJ LONGITUDINAL JOINT
- REQ'D CATCH BASIN
- 7" CONCRETE PAVEMENT (W/6x6-6 GAGE W.W.R.)
- 4" CONCRETE SIDEWALK (W/6x6-6 GAGE W.W.R.)
- BRICK PAVERS

HOLLY & SMITH ARCHITECTS

HAMMOND
 T 985.345.5210
 NEW ORLEANS
 T 504.585.1315
 www.hollyandsmith.com

New Office Headquarters
STOA Group
 Hammond, Louisiana



NO.	DESCRIPTION	DATE
2	REVISION	8-14-20

PROJECT NO. 19082
 PHASE CD
 DATE 08.07.20
 PROJECT MANAGER NBZ
 QUALITY CONTROL JEP

This drawing, as an instrument of service, is and shall remain the property of the Architect and shall not be reproduced, published, or used in any way without the permission of the Architect.
 © Holly & Smith Architects, APAC

BIDDING DOCUMENTS



C400
 PAVING PLAN

H/S