

COUNCIL MEETING AGENDA REQUEST FORM

COUNCIL MEETING DATE: November 09, 2021

SUBJECT/REASON FOR AGENDA ITEM: _____

Temporarily Alcohol Permit Waiver | Open Container Law Waiver

Other: _____

Please be specific about the reason to be on the agenda.

A Resolution authorizing the purchase of a JD 410SL Backhoe Loader for \$115,833.98 for the Street Department. State Contract # 44000117717

Requested By: Street Department

NAME: Robert Williams

ADDRESS _____

PHONE # _____ CELL PHONE: _____

EMAIL: _____ FAX: _____

Please note that the Hammond City Council meets the Second and Fourth Tuesday of the Month at 5:30pm, 312 East Charles Street, Hammond, LA 70401, All requests have to be submitted to the City Council Clerk by the Wednesday prior of the meeting no later than 4:30pm, All requests can be submitted electronically to cockerham_la@hammond.org or fax (985) 277-5611. If you have any questions please call (985) 277-5610

BELOW TO BE FILLED OUT BY COUNCIL CLERK

DATE RECEIVED: _____ TIME RECEIVED: _____

Council Clerk: Lisa Cockerham Agenda Item Number _____

Approved: _____ (Yes) _____ (No)

Remarks: _____

Kip Andrews
Council President

Lisa Cockerham

Date

DIVISION OF ADMINISTRATION

STATE OF LOUISIANA



Office of State Procurement

Contract Detail

Contract #	4400017717	T-number	92700 - INDUSTRIAL EQPT JOHN DEERE BN
Description	John Deere Industrial B/N Statewide		
LAPS Contract	Yes	Prime Vendor Name	W L DOGGETT LLC
SEBD Vendor	No	SE/HI Vendor	No
VSE Vendor	No	DVSE Vendor	No
Effective From-To	09/01/2019 - 08/31/2022	Coop Procure	Yes
Delivery Days ARO	0		
P-card Accepted	Yes		
Discounts Apply	No		

Locations

Statewide

Buyer Information

Buyer Code	90000018	Purchasing Agency	Office of State Purchasing
Buyer Name	DONALD HUNTER	Contact Email	DONALD.HUNTER2@LA.GOV
Contact Phone	225-342-5484		

Vendor Distributor

Vendor Name	SEBD	SE/HI	VSE	DVSE	Order/General Address
W L DOGGETT LLC	NO	NO	NO	NO	10110 DARADALE AVE STE A BATON ROUGE , LA 70816 Contact: Grant Gustin Email: grant.gustin@doggett.com Phone: 225-291-3750 FAX: 225-296-5132 Contact: Derek Paternostro Email: derek.paternostro@doggett.com Phone: 225-291-3750 FAX: Contact: Brandy Deffes Email: brandy.deffes@doggett.com Phone: 9858933005 FAX: Contact: Mike Ortiz Email: mike.ortiz@doggett.com Phone: 3612890727 FAX: Contact: Brandy Deffes Email: brandy.deffes@doggett.com Phone: 504-913-8548 FAX: 225-368-2241

Contract Items

Line #	Product Category	Material/ Part Number	Line Item Description	No. of Catalog Items	UOM	Gross Price
1	22101701		J Deere Indust Equip, parts, acces & att	0		\$0.00

[View Contract](#)
[View Notes](#)
[Return](#)
[New Search](#)
[Show Additional Attachments](#)

**Attachment D: John Deere BN Contract 4400017717 T-Number 92700
Price Sheet**

Line	Description	Unit of Measure	Delivery Time (Days)	Discount (%) offered off manufacturer's current list price
1	Excavator, Equipment & Accessories. Brand Name John Deere	Each	30-90	28%
2	Excavator, Attachments. Brand Name John Deere	Each	30-90	13%
3	Excavator, Parts. Brand Name John Deere	Each	30	2%
4	Excavator, Compact Equipment & Accessories. Brand Name John Deere	Each	30-90	21%
5	Excavator, Compact Attachments. Brand Name John Deere	Each	30-90	12%
6	Excavator, Compact Parts. Brand Name John Deere	Each	30	2%
7	Crawler Dozer, Equipment & Accessories. Brand Name John Deere	Each	30-90	22%
8	Crawler Dozer, Attachments. Brand Name John Deere	Each	30-90	13%
9	Crawler Dozer, Parts. Brand Name John Deere	Each	30	2%
10	Motor Grader, Equipment & Accessories. Brand Name John Deere	Each	30-90	38%
11	Motor Grader, Attachments. Brand Name John Deere	Each	30-90	13%
12	Motor Grader, Parts. Brand Name John Deere	Each	30	2%
13	Compact Track Loader, Equipment & Accessories. Brand Name John Deere	Each	30-90	26%
14	Compact Track Loader Attachments. Brand Name John Deere	Each	30-90	12%
15	Compact Track Loader Parts. Brand Name John Deere	Each	30	2%
16	Skid Steer Loader Equipment & Accessories. Brand Name John Deere	Each	30-90	25%
17	Skid Steer Loader Attachments. Brand Name John Deere	Each	30-90	12%
18	Skid Steer Loaders Parts. Brand Name John Deere	Each	30	2%
19	Four-Wheel Drive Loader, Compact Equipment & Accessories. Brand Name John Deere.	Each	30-90	22%
20	Four-Wheel Drive Loader, Compact Attachments. Brand Name John Deere.	Each	30-90	12%
21	Four-Wheel Drive Loader, Compact Parts. Brand Name John Deere.	Each	30	2%
22	Four-Wheel Drive Loader Equipment & Accessories. Brand Name John Deere.	Each	30-90	31%
23	Four-Wheel Drive Loader Attachments. Brand Name John Deere.	Each	30-90	12%
24	Four-Wheel Drive Loader Parts. Brand Name John Deere.	Each	30	2%
25	Backhoe / Loader Combination Equipment & Accessories. Brand Name John Deere.	Each	30-90	38%
26	Backhoe / Loader Combination Attachments. Brand Name John Deere.	Each	30-90	13%
27	Backhoe / Loader Combination Parts. Brand Name John Deere.	Each	30	2%

28	Tractor Loader Backhoe Combination Equipment & Accessories. Brand Name John Deere.	Each	30-90	29%
29	Tractor Loader Backhoe Combination Attachments. Brand Name John Deere.	Each	30-90	12%
30	Tractor Loader Backhoe Combination Parts. Brand Name John Deere.	Each	30	2%
31	Landscape Loader Combination Equipment and Accessories. Brand Name John Deere.	Each	30-90	29%
32	Landscape Loader Combination Attachments. Brand John Deere	Each	30-90	12%
33	Landscape Loader Combination Parts. Brand Name John Deere	Each	30	2%

**LOUISIANA STATE BRAND
SALES QUOTATION**

DOGGETT

Salesperson: Thompson / 616
Cell:
E-mail:



Vendor ID 310010760
Contract 44000117717
T- Number 92700

Customer: City of Hammond	Manufacturer: John Deere
Contact: Robert Williams	Model: 410L
Phone:	Stock #: 00000
Email:	Serial #: TBD
Date: 10/06/21	Expires: 08/30/22

Line Item	Description	Commodity	List Price	State Brand Discount	Sales Price
25	BACKHOE LOADERS 410L	JD 410SL Backhoe Loader	\$186,829.00	38%	\$115,833.98

Machine Build

	0AB1T	410L LOADER BACKHOE			
	2401	ENGLISH DECALS			
	170K	JD LINK			
	3025	2 WHEEL DRIVE			
	2035	CAB WITH A/C			
	9060	FRONT VIEW MIRROR			
	9210	LEFT SIDE CUP HOLDER			
	9919	SUN VISOR			
	9920	REAR VIEW MIRRORS			
	9965	SIR SUSPENSION CLOTH SEAT			
	4444	GALAXY 21L24 REAR / 12.5/80-18 FRONT			
	8625	SINGLE BATTERY			
	6020	EXTENDIBLE DIPPERSTICK			
	6210	NO REAR AUXILIARY HYDRAULICS			
	5225	STANDARD DEERE COUPLER			
	5656	24" BACKHOE BUCKET			
	7685	MULTI-PURPOSE 4 IN 1 BUCKET			
	7080	THREE FUNCTION LOADER HYD'S			
	8475	1000 LB COUNTERWEIGHT			
	1065	JD TIER 4 ENGINE			
	9515	DIAGNOSTIC SAMPLING PORTS			

TRADE INFORMATION		Sales Price	\$115,833.98
		<i>Warranty</i>	-
		<i>Down Payment</i>	-
		<i>TRADE IN + PAYOFF (if applicable)</i>	-
Warranty Terms	1 YEAR FULL MACHINE	SUB TOTAL	\$115,833.98
		DOCUMENT FEES	\$0.00
		TOTAL Without Tax	\$115,833.98
		Applicable Tax	
		Total	\$115,833.98

Machine Lead Time: 180-210 Days

410L BACKHOE LOADER

06-Oct-2021



Code	Description		
OAB1T	410L BACKHOE LOADER	1	\$141,496.00
Option Codes			
2401	English Decals with English Operator and Safety Manuals English decals installed and English operator's manual. Requires engine code 1065.	1	No Added Cost
170K	JDLink™ Includes integrated cab wiring harness, antenna, and JDLink Modem (MTG). JDLink connectivity is enabled separately through the JDLink website. Connectivity service is subject to country availability.	1	No Added Cost
3025	2 Wheel Drive Autoshift Transmission With AutoShift 5F/3R Transmission. Autoshift can turned on/off in the SSM. When Autoshift if off, Backhoe will operate with Powershift transmission.	1	-\$8,406.00

2035	Cab	1	\$13,243.00
	<p>Isolation mounted Modular design ROPS/FOPS Level 2 (meets ISO 3449 & ISO 3471) Molded roof. Tinted safety glass. Deluxe interior trim. Headliner. Molded floor mats. Less radio (Cab includes power connector for radio and threaded bosses for mounting brackets - see radio kit installation instructions). Air Conditioning 26,000 BTU. CFC free R134a refrigerant. Heater/defrosters/pressurizer, 40,000 BTU, 10 speed. Deluxe Mechanical Suspension, Cloth, Swivel Seat with Lumbar Adjustment and Arm Rests, Fully Adjustable. Keyless Start. 3 inch Orange Seat Belt with retractor. Tilt Steering Wheel. Interior Rearview Mirror. Front 2-speed wiper with windshield washer and rear 1-speed wiper. (2) front driving/working halogen lights - 32,500 Candlepower Each (2) rear working halogen lights - 32,500 Candlepower Each (6) additional work roof lights adds 2 front, 2 rear and 1 on each side of roof (4) turn signal/flashing/rear stop/tail lights - 2 front and rear (2) rear reflector</p> <p>See Order As Desired codes for additional Cab options not included in standard Cab (i.e. Air Suspension Seat, Radio, Sun Visor).</p>		
9060	Front View Mirror	1	\$82.00
9210	Left Side Console Storage with Cup Holders	1	\$81.00
9919	Sun Visor	1	\$95.00
9920	Exterior Rear View Mirrors (2)	1	\$343.00
9965	Seat, Cloth Air-Suspension	1	\$503.00
	For enclosed Cab.		
4444	Galaxy 21L 24 12PR Rear & 12.5/80-18 12PR Front	1	No Added Cost
	<p>Requires axle code 3025. Rear tire chains require wheel spacers (AT347522).</p>		
8625	Single Maintenance Free Battery	1	No Added Cost
	<p>175 Minute Reserve Capacity (950 CCA) Recommended for use in ambient temperatures ABOVE 32 degrees F (0 degrees C).</p>		
6020	Extendible Dipperstick	1	\$8,365.00
	Extended stabilizer legs.		

6210	No Auxiliary	1	No Added Cost
5225	Mechanical Controls, Two Lever, ISO (DEERE)	1	No Added Cost
5410	DEERE Standard Quick Coupler - Less Thumb	1	\$1,538.00
	If ordering thumb, must order option 5411 or 5412.		
	For use with 310SE, SG, SJ, SK, SL; 410E, G, J, K, L backhoe buckets. Not compatible with 310E, G, J, K, L Series Backhoe Buckets.		
5656	24" (610 mm) Wide, Heavy-Duty, 7.5 Cu. Ft. (0.21 Cu. M.) Cap	1	\$1,439.00
	Bucket includes TK Teeth.		
7685	Wide Multipurpose Bucket	1	\$7,973.00
	1.32 Cu. Yd. (1.0 Cu. M.), 92 in. (2.34 m). Requires Code 7080, Aux. Loader Hydraulic Includes reversible bolt-on cutting edge and skid plates. Includes reversible cutting edge for moldboard and back of clamshell. Pre-drilled for eight teeth - Order teeth from parts. Includes two lift holes.		
7080	Three-Function Loader Hydraulics, Single Lever	1	\$3,268.00
	Single lever loader control with electric clutch disconnect, momentary MFWD, transmission quick-shift, and electro-hydraulic auxiliary control. For multi-purpose bucket and front attachments. Includes valve with circuit relief and 5 In. (12.7 mm) hoses and steel lines to loader cross tube.		
8475	1000 Lb. (454 kg) Front Counterweight	1	\$1,374.00
1065	John Deere PowerTech™ EWL 4.5L (276 Cu. In.) Engine Meet	1	\$15,228.00
	Net Peak Power of 116 Hp. For use only in areas where EPA Final Tier 4/EU Stage IV is required.		
	Turbocharged. Wet Sleeve Cylinder Liners. 4 Valves / Cylinder. Electronically Controlled HPCR Fuel Delivery System, B20 Biodiesel Compatible. Serpentine Belt with Automatic Belt Tensioner. Enclosed Safety Fan Guard. Vertical Spin-On Engine Oil Filter. Spin-On Fuel Filter with Water Separator. Dual Safety Element Dry-Type Air Cleaner with Evacuator Valve. Underhood Exhaust Filter and Catalysts with Evacuator Valve. Automatic Exhaust Filter Regeneration. Glow Plugs. Electronically controlled, variable-speed cooling fan.		

9515	Diagnostic Oil Sampling Ports	1	\$207.00
	Requires code engine code 1085 or 1065.		
	Includes 4 ports:		
	Engine oil		
	Engine coolant		
	Transmission oil		
	Hydraulic oil		

Total			\$186,829.00
--------------	--	--	---------------------

Manufacturer's Suggested List Price shown. Retail prices may vary by dealer. Unless stated otherwise, taxes, freight, setup, delivery and other dealer specific charges not included in the pricing. Options/items noted with anything other than price will have additional costs. Pricing, availability, and specifications subject to change without notice. Special program pricing may be available on certain models. See dealer for details. Prices shown are in U.S. dollars and valid only in the U.S.



www.LouisianaCat.com

Machine Sales Quotation:

Patrick Cox
+1 2259211879
patrick.cox@louisianacat.com

Quote #: Q-13825
Date: Oct 12, 2021
Account Name: CITY OF HAMMOND

New CATERPILLAR 430

Machine List Price: \$162,738.00

Current Approximate Hours: 0

CAT Corporate Discount (22%)
CAT Corporate Attachment Discount

Discount: (\$35,802.36)
Discount: (\$2,052.82)

New Machine Warranty 12 Months Unlimited Hours Premier	\$0.00
New Machine Warranty 36 Months 3000 Hours Premier	\$0.00
CSA Bundle 1-500hr / 1-1000 hr	\$0.00
BUCKET-MP, 1.3 CYD + Cutting Edge	\$7,553.00
BUCKET-HD, 24", 6.2 CFT	\$1,778.00
Prep + Fuel + Def	\$0.00
Delivery/Hauling	\$0.00

Total: \$134,213.82
(Excluding Tax)

Notes: Cat Sourcewell Contract 032119
Sourcewell Member ID# 2252
City of Hammond
310 E Charles St
Hammond, LA 70401-3324

Alexandria 318-443-2577	Hammond 985-340-2820	Lake Charles 337-439-3601	Monroe 318-323-1345	Reserve 985-536-1121
Bossier City 318-746-2341	Lafayette 337-837-2476	Mansfield 318-872-9700	Prairieville 225-673-3480	





Louisiana CAT

www.LouisianaCat.com

**Machine Configuration
Model: 430**

Description	Reference #	List Price
430	5433343	\$110,290.00
LANE 3 ORDER	0P9003	\$0.00
STICK, EXTENDABLE, 16FT	5434286	\$5,450.00
PT, 4WD/2WS, POWERSHIFT	5441066	\$10,430.00
ENGINE, 86KW, C3.6 DITA, T5	5435181	\$10,370.00
HYDRAULICS, MP, 6FCN/8BNK, ST	5427774	\$2,845.00
CAB, DELUXE	5440883	\$9,120.00
DISPLAY, STANDARD	5455047	\$0.00
AIR CONDITIONER, T5	5427810	\$2,610.00
WORKLIGHTS (8) HALOGEN LAMPS	4916734	\$0.00
SEAT, DELUXE FABRC	5734524	\$1,010.00
BELT, SEAT, 2" SUSPENSION	2061747	\$0.00
COUNTERWEIGHT, 1015 LBS	3379696	\$1,915.00
TIRES, 340 80-18/500 70-24, MX	5330488	\$1,820.00
STABILIZER PADS, FLIP-OVER	9R6007	\$365.00
LOADER BUCKET PINS	5458548	\$0.00
INSTRUCTIONS, ANSI	5590872	\$0.00
SERIALIZED TECHNICAL MEDIA KIT	4218926	\$0.00
RIDE CONTROL	5516453	\$1,615.00
LINES, COMBINED AUX, E-STICK	5481233	\$3,800.00
BEACON, MAGNETIC MOUNT	2114292	\$251.00
RADIO, FM BLUETOOTH	5402298	\$600.00
PRODUCT LINK, CELLULAR, PLE643	5606797	\$0.00
BATTERY, HEAVY DUTY	5165913	\$247.00
AUTO-UP STABILIZERS	5675090	\$0.00
PACK, DOMESTIC TRUCK	0P0210	\$0.00
SHIPPING/STORAGE PROTECTION	4616839	\$0.00
RUST PREVENTATIVE APPLICATOR	4621033	\$0.00

Alexandria
318-443-2577

Hammond
985-340-2820

Lake Charles
337-439-3601

Monroe
318-323-1345

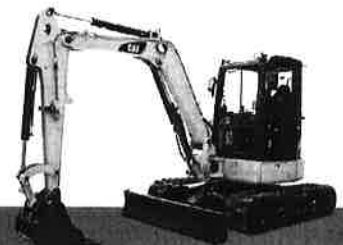
Reserve
985-536-1121

Bossier City
318-746-2341

Lafayette
337-837-2476

Mansfield
318-872-9700

Prairieville
225-673-3480



Sales • Rental • Used • Parts & Service



Louisiana CAT

www.LouisianaCat.com

Attachments

Description	Reference #	List Price
Attachment 1		\$7,553.00
Attachment 2		\$1,778.00
CAT Corporate Attachment Discount (0%)		(\$2,052.82)

Alexandria
318-443-2577

Hammond
985-340-2820

Lake Charles
337-439-3601

Monroe
318-323-1345

Reserve
985-536-1121

Bossier City
318-746-2341

Lafayette
337-837-2476

Mansfield
318-872-9700

Prairieville
225-673-3480



Sales • Rental • Used • Parts & Service



www.LouisianaCat.com

Signature: _____

Effective Date: ____/____/____

Name (Print): _____

Title: _____

Terms & Conditions:

Any additional, applicable taxes and fees will apply.

We would like to thank you for your interest in our company and our products and are pleased to quote the following for your consideration. This quotation is valid for 30 days, after which we reserve the right to re-quote. If there are any questions, please do not hesitate to contact me.

Sincerely,
Patrick Cox
+1 2259211879
patrick.cox@louisianacat.com

Alexandria
318-443-2577
Bossier City
318-746-2341

Hammond
985-340-2820
Lafayette
337-837-2476

Lake Charles
337-439-3601
Mansfield
318-872-9700

Monroe
318-323-1345
Prairieville
225-673-3480

Reserve
985-536-1121





Louisiana 

www.LouisianaCat.com

Alexandria
318-443-2577

Hammond
985-340-2820

Lake Charles
337-439-3601

Monroe
318-323-1345

Reserve
985-536-1121

Bossier City
318-746-2341

Lafayette
337-837-2476

Mansfield
318-872-9700

Prairieville
225-673-3480



Sales • Rental • Used • Parts & Service