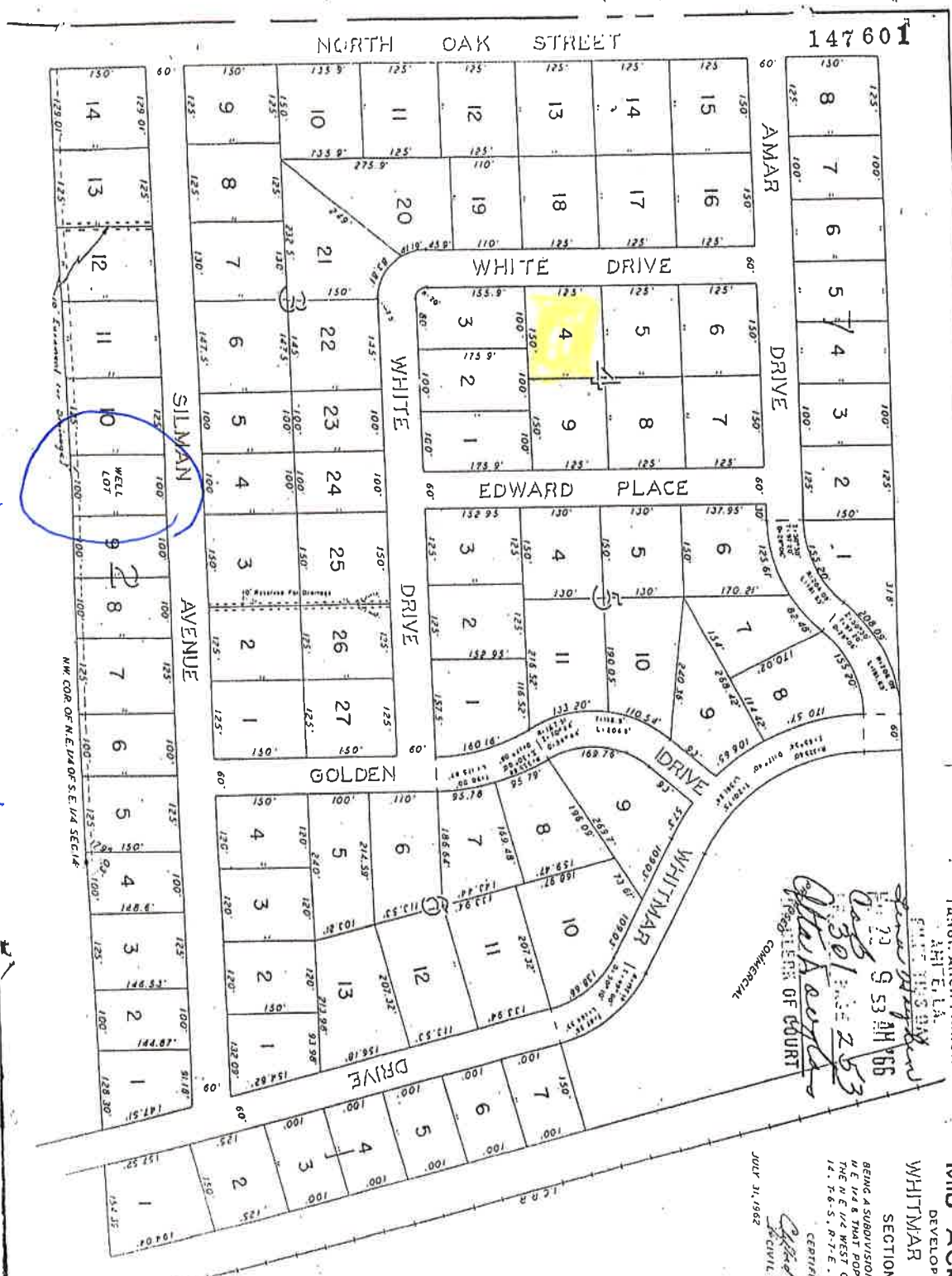


301-253



Well lot

147601

147601

RECORDED IN THE PUBLIC RECORDS OF TANGIPAHOLA PARISH, LA. BOOK 135 PAGE 66
 DATE 09 23 1962
 301-253
 [Signature]
 CIVIL ENGINEER

MID ACRES, INC.
 DEVELOPERS OF
WHITMAR ACRES
 SECTION "B"
 BEING A SUBDIVISION OF THE S.W. 1/4 OF THE N.E. 1/4 8 THAT FORMS THE L. 13 B. W. 1/4 OF THE N.E. 1/4 24 WESSE, TANGIPAHOLA PARISH, LA. 147601
 CERTIFIED CORRECT
 [Signature]
 CIVIL ENGINEER
 JULY 31, 1962



301-253